

**500' Radius
Owned by CABIN MOUNTAIN LLC**

20-13-10000-0006
STATE OF WASH (PARKS & REC)
PO BOX 42650
OLYMPIA WA 98504-

20-13-10000-0012
STATE OF WASH
DEPT FISH AND WILDLIFE
600 CAPITOL WAY N
OLYMPIA WA 98501-1091

20-13-10090-0315
STATE OF WASH
DEPT FISH AND WILDLIFE
600 CAPITOL WAY N
OLYMPIA WA 98501-1091

20-13-11000-0004
CABIN MOUNTAIN LLC
5814 FRANCES AVE NE
TACOMA WA 98422

20-13-11000-0006
CABIN MOUNTAIN LLC
5814 FRANCES AVE NE
TACOMA WA 98422

20-13-11000-0008
CABIN MOUNTAIN LLC
5814 FRANCES AVE NE
TACOMA WA 98422

20-13-11000-0010
CABIN MOUNTAIN LLC
5814 FRANCES AVE NE
TACOMA WA 98422

20-13-11010-0005
STATE OF WASH (PARKS & REC)
7150 CLEANWATER LN
OLYMPIA WA 98504

20-13-10000-0010
STATE OF WASH
DEPT FISH AND WILDLIFE
600 CAPITOL WAY N
OLYMPIA WA 98501-1091

20-13-10000-0014
STATE OF WASH
DEPT FISH AND WILDLIFE
600 CAPITOL WAY N
OLYMPIA WA 98501-1091

20-13-11000-0003
CABIN MOUNTAIN LLC
5814 FRANCES AVE NE
TACOMA WA 98422

20-13-11000-0005
CABIN MOUNTAIN LLC
5814 FRANCES AVE NE
TACOMA WA 98422

20-13-11000-0007
CABIN MOUNTAIN LLC
5814 FRANCES AVE NE
TACOMA WA 98422

20-13-11000-0009
CABIN MOUNTAIN LLC
5814 FRANCES AVE NE
TACOMA WA 98422

20-13-11000-0014
CABIN MOUNTAIN LLC
5814 FRANCES AVE NE
TACOMA WA 98422

20-13-11020-0002
USA (WNF)
WENATCHEE NATIONAL FOREST
215 MELODY LN
WENATCHEE WA 98801



20-13-11020-0004
STATE OF WASH (PARKS & REC)
PO BOX 42650
OLYMPIA WA 98504-

20-13-11020-0007
STATE OF WASH (PARKS & REC)
PO BOX 42650
OLYMPIA WA 98504-

20-13-11020-0010
BNSF RAILWAY COMPANY
PO BOX 961089
FORT WORTH TX 76161-0089

20-13-11030-0002
USA (DEPT OF INTERIOR)
BUREAU OF RECLAMATION
FISH PASSAGE & PROTECTIVE FAC
OLYMPIA WA

20-13-11030-0003
KITTITAS CO WATER DIST #3
PO BOX 68
EASTON WA 98925

20-13-11030-0004
CABIN MOUNTAIN LLC
5814 FRANCES AVE NE
TACOMA WA 98422

20-13-11042-0003
LARSEN, TOM L ETUX
7405 MEYERS RD
SUMNER WA 98390

20-13-11042-0006
PLUM CREEK LAND CO
PO BOX 1990
COLUMBIA FALLS MT 59912

20-13-11042-0007
USA (DEPT OF INTERIOR)
BUREAU OF RECLAMATION
FISH PASSAGE & PROTECTIVE FAC
OLYMPIA WA

20-13-11053-0102
BROOKS, WAYNE
1705 DALTON LANE
YAKIMA WA 98901-

20-13-11053-0104
BROOKS, WAYNE
1705 DALTON LANE
YAKIMA WA 98901-

20-13-11053-0105
JONES, JAMES M ETUX
5120 LAWRENCE BLVD
AMARILLO TX 79106-4433

20-13-11053-0106
JONES, JAMES M ETUX
5120 LAWRENCE BLVD
AMARILLO TX 79106-4433

20-13-11053-0107
GRAZIANO, VITO D
126 BUTTERSCOTCH RD
LEXINGTON TN 38351

20-13-11053-0108
NIEBUHR, BRADLEY A
PO BOX 511
EASTON WA 98925

20-13-11053-0112
NIEBUHR, BRADLEY A
PO BOX 511
EASTON WA 98925

20-13-11053-0114
TATE, DAVID J ETUX
PO BOX 141
EASTON WA 98925-

20-13-11053-0115
TATE, DAVID J. JR ETUX
PO BOX 141
EASTON WA 98925

20-13-11053-0116
DA SILVA, LEANN M
3081 WILSON CREEK RD
ELLENSBURG WA 98926-

20-13-11053-0119
BASTERRECHEA, CARMEN
PO BOX 244
RONALD WA 98940

20-13-11053-0201
HUNT, ELWOOD H ETUX
PO BOX 1254
LAKE STEVENS WA 98258-

20-13-11053-0210
FAY, REX E & MARQUERITE
% EARLENE FAY
PO BOX 60548
BOULDER CREEK NV 89006-

20-13-11053-0214
FAY, REX E & MARQUERITE
% EARLENE FAY
PO BOX 60548
BOULDER CREEK NV 89006-

20-13-11053-0217
FAY, REX E & MARQUERITE
% EARLENE FAY
PO BOX 60548
BOULDER CREEK NV 89006-

20-13-11053-0228
SACKETT, ROGER W ETUX
TRUSTEES
4501 169TH AVE SE
BELLEVUE WA 98006-

20-13-11053-0305
KITITAS RECLAMATION DIST
PO BOX 276
ELLENSBURG WA 98926

20-13-14000-0002
PLUM CREEK TIMBER CO L P
PO BOX 1990
COLUMBIA FALLS MT 59912

20-13-11053-0118
JENSEN, STEVEN M ETUX
PO BOX 435
EASTON WA 98925

20-13-11053-0121
RICHTER, SAMUEL D ETUX
PO BOX 803
EASTON WA 98925-

20-13-11053-0208
FAY, REX E & MARQUERITE
% EARLENE FAY
PO BOX 60548
BOULDER CREEK NV 89006-

20-13-11053-0212
FAY, REX E & MARQUERITE
% EARLENE FAY
PO BOX 60548
BOULDER CREEK NV 89006-

20-13-11053-0215
FAY, REX E & MARQUERITE
% EARLENE FAY
PO BOX 60548
BOULDER CREEK NV 89006-

20-13-11053-0219
KITITAS RECLAMATION DIST
PO BOX 276
ELLENSBURG WA 98926

20-13-11053-0301
KITITAS CO ROAD DEPT
411 N RUBY
ELLENSBURG WA 98926

20-13-11053-0401
KITITAS RECLAMATION DIST
PO BOX 276
ELLENSBURG WA 98926

20-13-14010-0002
CABIN MOUNTAIN LLC
% MONAHAN, GERALD L
5814 FRANCES AVE NE
TACOMA WA 98422

20-13-14010-0003
CABIN MOUNTAIN LLC
5814 FRANCES AVE NE
TACOMA WA 98422

20-13-14010-0004
CABIN MOUNTAIN LLC
5814 FRANCES AVE NE
TACOMA WA 98422-

20-13-14011-0002
GRAHAM-HOWE, BARBARA C
PO BOX 36
EASTON WA 98925-

20-13-14011-0003
GRAHAM-HOWE, BARBARA C
PO BOX 36
EASTON WA 98925-

20-13-14011-0007
THIELEN, REEVES A
P O BOX 413
EASTON WA 98925-

20-13-14020-0001
PUGET SOUND ENERGY/ELECTRIC
ATTN: PROPERTY TAX
PO BOX 90868
BELLEVUE WA 98009-0868

20-13-14020-0002
CABIN MOUNTAIN LLC
5814 FRANCES AVE NE
TACOMA WA 98422-

20-13-14020-0004
CABIN MOUNTAIN LLC
% MONAHAN, GERALD L
5814 FRANCES AVE NE
TACOMA WA 98422

20-13-14050-0106
GRAHAM, GLENN A TRUST
PO BOX 36
EASTON WA 98925

20-13-14050-0113
PUGET SOUND ENERGY/ELECTRIC
ATTN: PROPERTY TAX
PO BOX 90868
BELLEVUE WA 98009-0868

20-13-14050-0201
GRAHAM, BARBARA A TRUSTEE OF
GLEN A GRAHAM TRUST
PO BOX 36
EASTON WA 98925-

20-13-14050-0204
KITITITAS RECLAMATION DIST
PO BOX 276
ELLENSBURG WA 98926

20-13-14050-0212
ZUVELA, JAMES R ETUX
PO BOX 826
SUQUAMISH WA 98392

20-13-14050-0301
GRAHAM, BARBARA C
PO BOX 36
EASTON WA 98925

20-13-14050-0302
KITITITAS RECLAMATION DIST
PO BOX 276
ELLENSBURG WA 98926

20-13-14050-0312
GRAHAM, BARBARA C
PO BOX 36
EASTON WA 98925

20-13-14050-0404
REEVES, CHASE BLUE D &
BOWDRE, JOHNA
3395 GARLAND PL
ENUMCLAW WA 98022

20-13-14050-0405
BEAUDRY, GERALD JR ETUX
PO BOX 697
EASTON WA 98925

20-13-14050-0407
THIELEN, REEVES A
P O BOX 413
EASTON WA 98925-

20-13-14050-0410
THIELEN, REEVES A
P O BOX 413
EASTON WA 98925-

20-13-15000-0001
PLUM CREEK TIMBER CO L P
PO BOX 1990
COLUMBIA FALLS MT 59912

20-13-23000-0001
PLUM CREEK TIMBER CO L P
PO BOX 1990
COLUMBIA FALLS MT 59912

20-13-13052-0002
GRAHAM, BARBARA C
PO BOX 36
EASTON WA 98925

20-13-13052-0003
DEGNAN, BRUCE R &
BATSON CHRISTIE A
PO BOX D
EASTON WA 98925

20-13-24000-0003
STATE OF WASH (DNR)
1111 WASHINGTON ST SE
PO BOX 47016
OLYMPIA WA 98504-7016

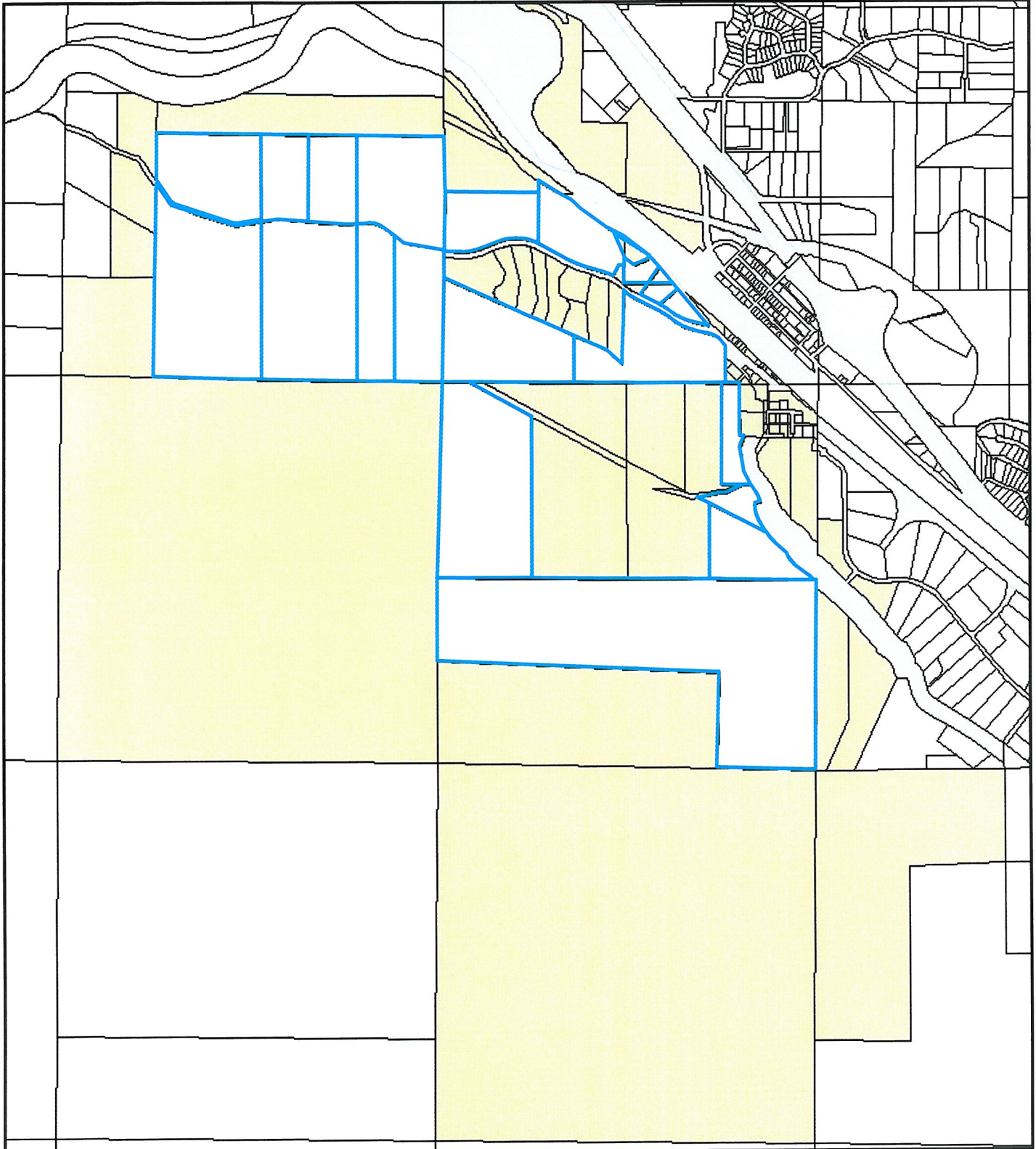
20-13-13030-0008
SPOKANE INVESTMENTS LLC
PO BOX 9810
LAKEWOOD WA 98498-

20-13-13030-0001
SPOKANE INVESTMENTS LLC
PO BOX 9810
LAKEWOOD WA 98498-

20-13-13030-0004
SPOKANE INVESTMENTS LLC
PO BOX 9810
LAKEWOOD WA 98498-

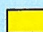
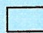

20-13-13030-0005
SPOKANE INVESTMENTS LLC
PO BOX 9810
LAKEWOOD WA 98498-

Cabin Mountain LLC



1 inch equals 0.35 miles

Legend

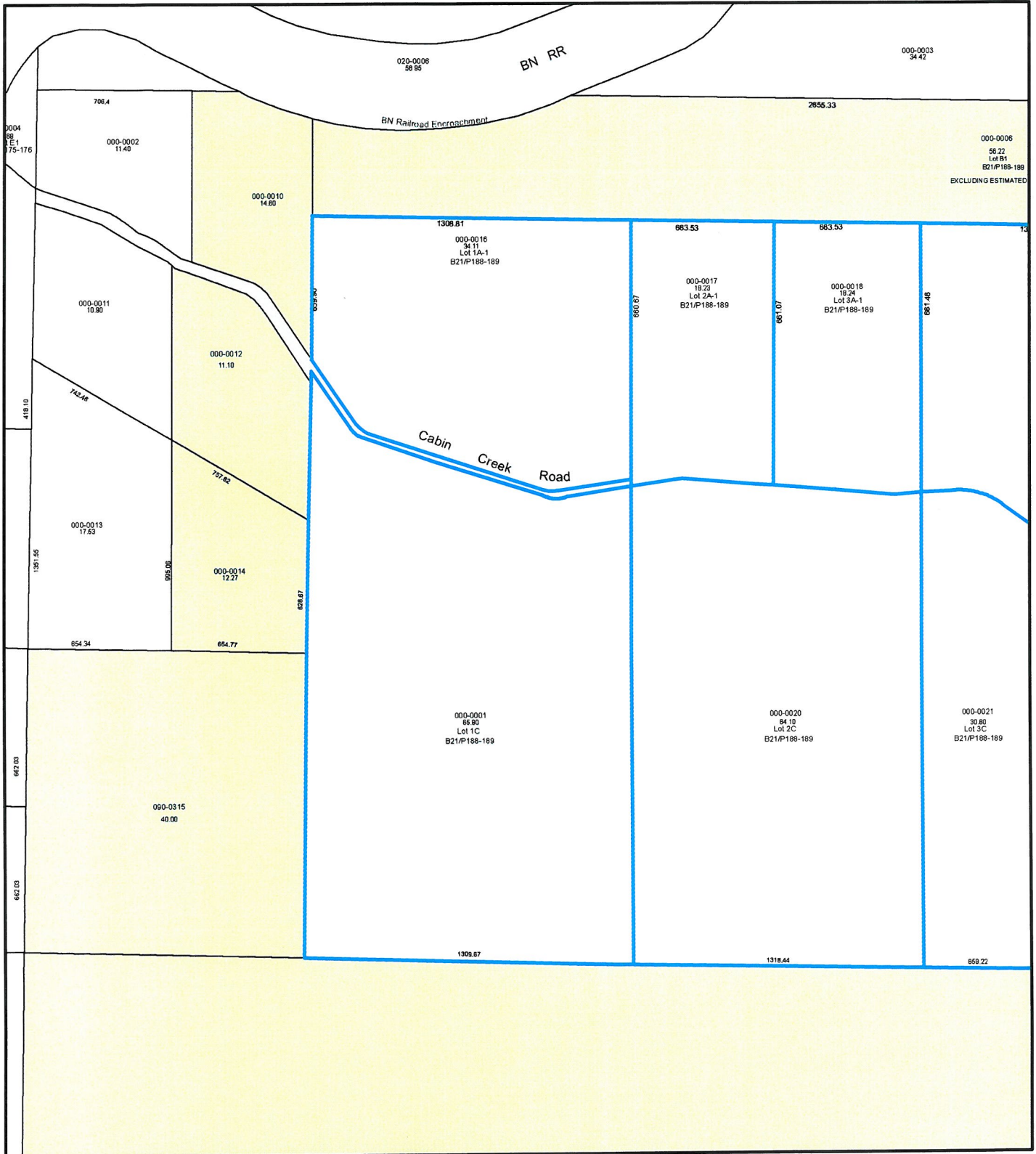
-  Buffer Result
-  Tax Parcels
-  Rights of Way

Disclaimer:

Kittitas County makes every effort to produce and publish the most current and accurate information possible. No warranties, expressed or implied, are provided for the data provided, its use, or its interpretation. Kittitas County does not guarantee the accuracy of the material contained herein and is not responsible for any misuse or representations by others regarding this information or its derivatives.



Cabin Mountain LLC



1 inch equals 0.12 miles

Legend

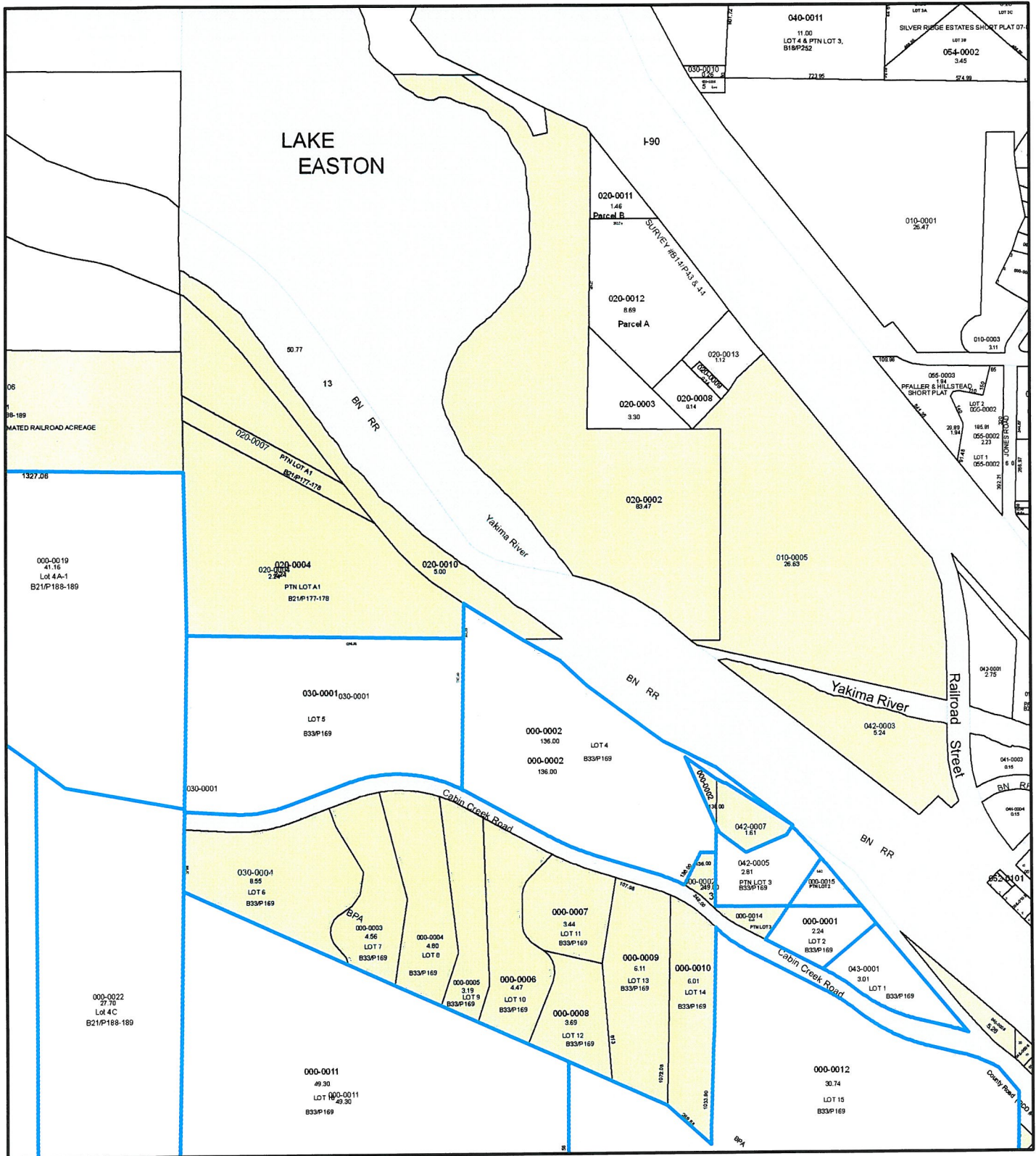
- Buffer Result
- Tax Parcels
- Rights of Way

Disclaimer:

Kittitas County makes every effort to produce and publish the most current and accurate information possible. No warranties, expressed or implied, are provided for the data provided, its use, or its interpretation. Kittitas County does not guarantee the accuracy of the material contained herein and is not responsible for any misuse or representations by others regarding this information or its derivatives.



Cabin Mountain LLC



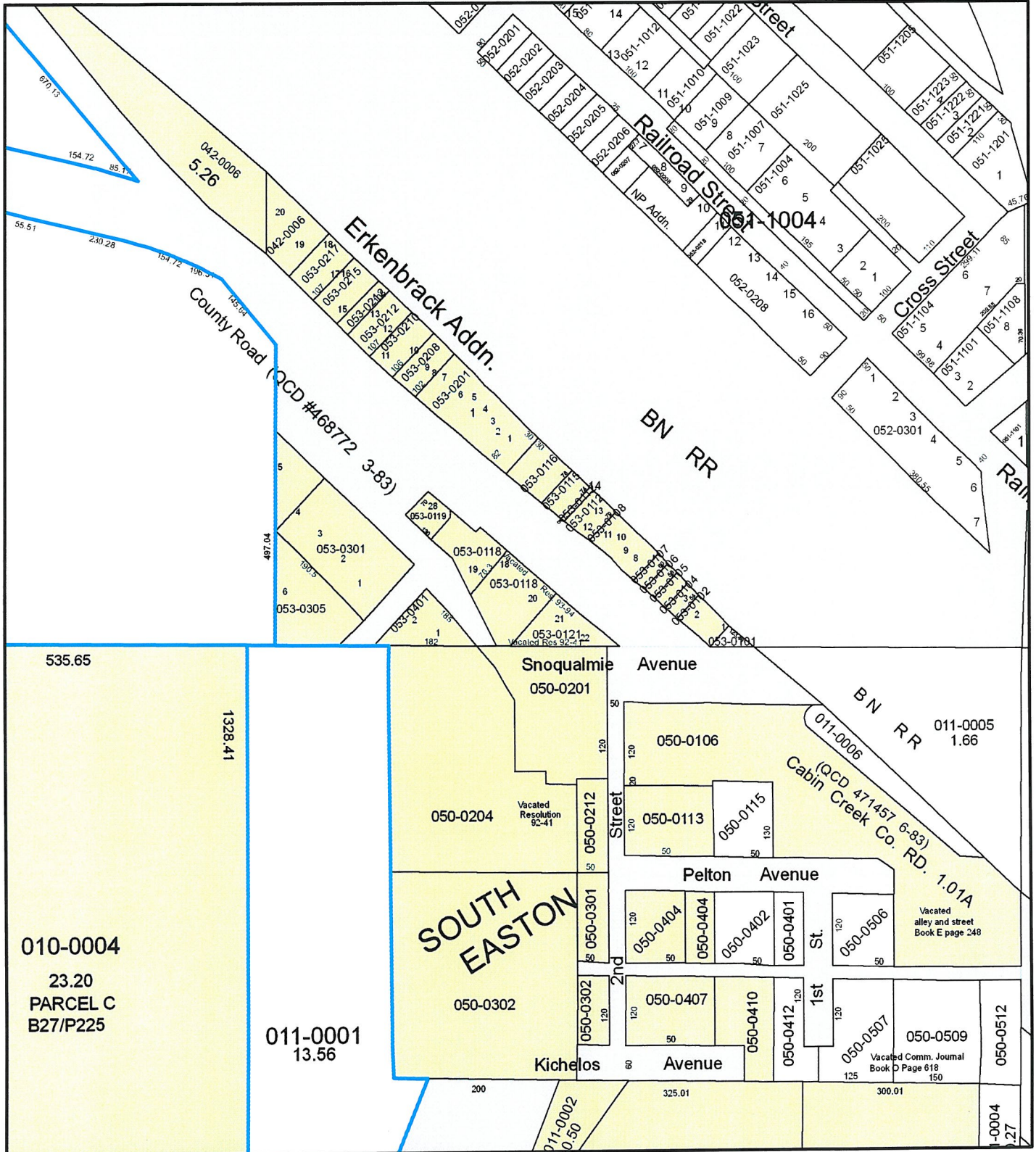
1 inch equals 0.12 miles

- Legend**
- Buffer Result
 - Tax Parcels
 - Rights of Way

Disclaimer:
 Kittitas County makes every effort to produce and publish the most current and accurate information possible. No warranties, expressed or implied, are provided for the data provided, its use, or its interpretation. Kittitas County does not guarantee the accuracy of the material contained herein and is not responsible for any misuse or representations by others regarding this information or its derivatives.



Cabin Mountain LLC



1 inch equals 0.04 miles

Legend

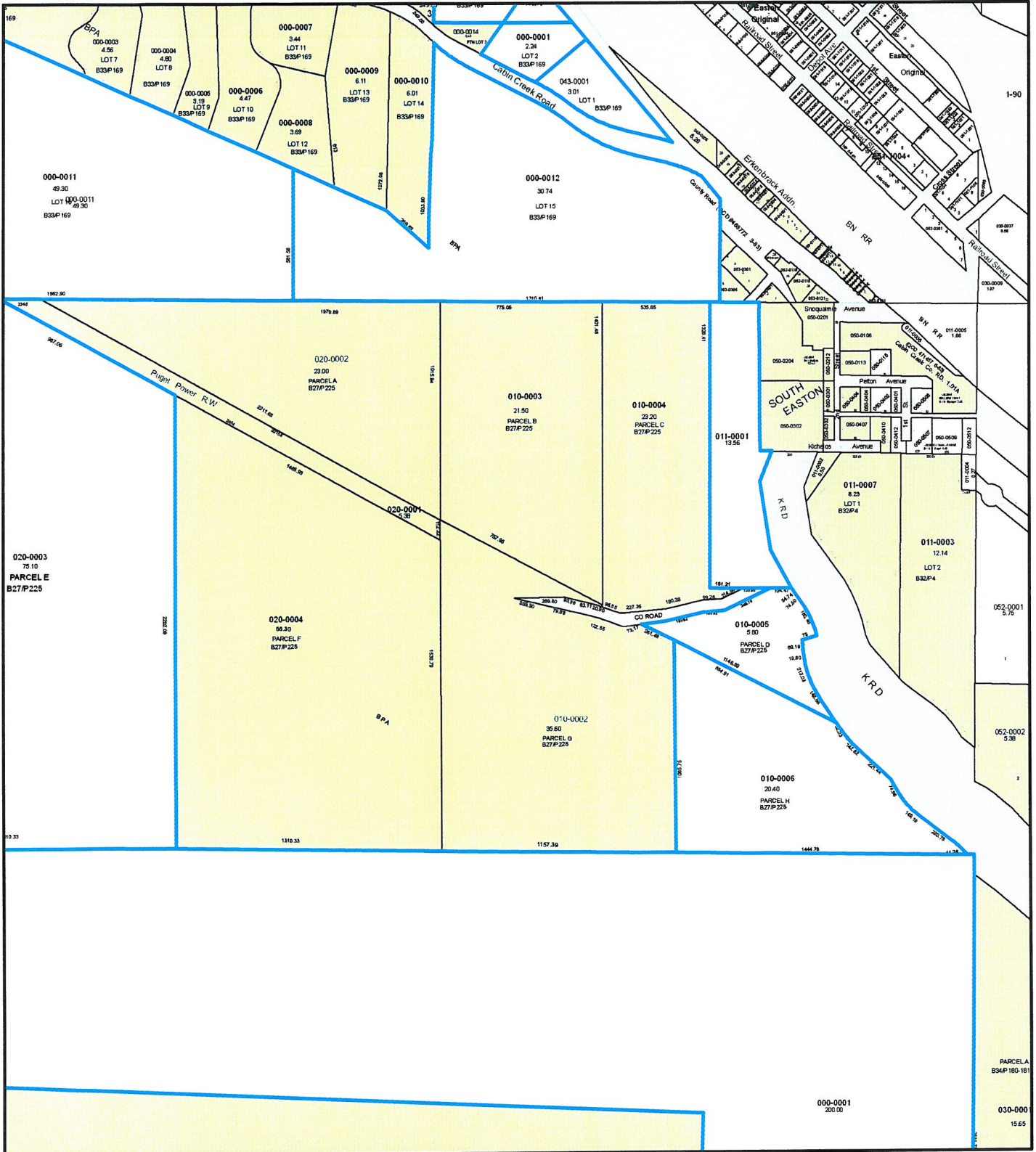
- Buffer Result
- Tax Parcels
- Rights of Way

Disclaimer:

Kittitas County makes every effort to produce and publish the most current and accurate information possible. No warranties, expressed or implied, are provided for the data provided, its use, or its interpretation. Kittitas County does not guarantee the accuracy of the material contained herein and is not responsible for any misuse or representations by others regarding this information or its derivatives.



Cabin Mountain LLC



1 inch equals 0.13 miles

Legend

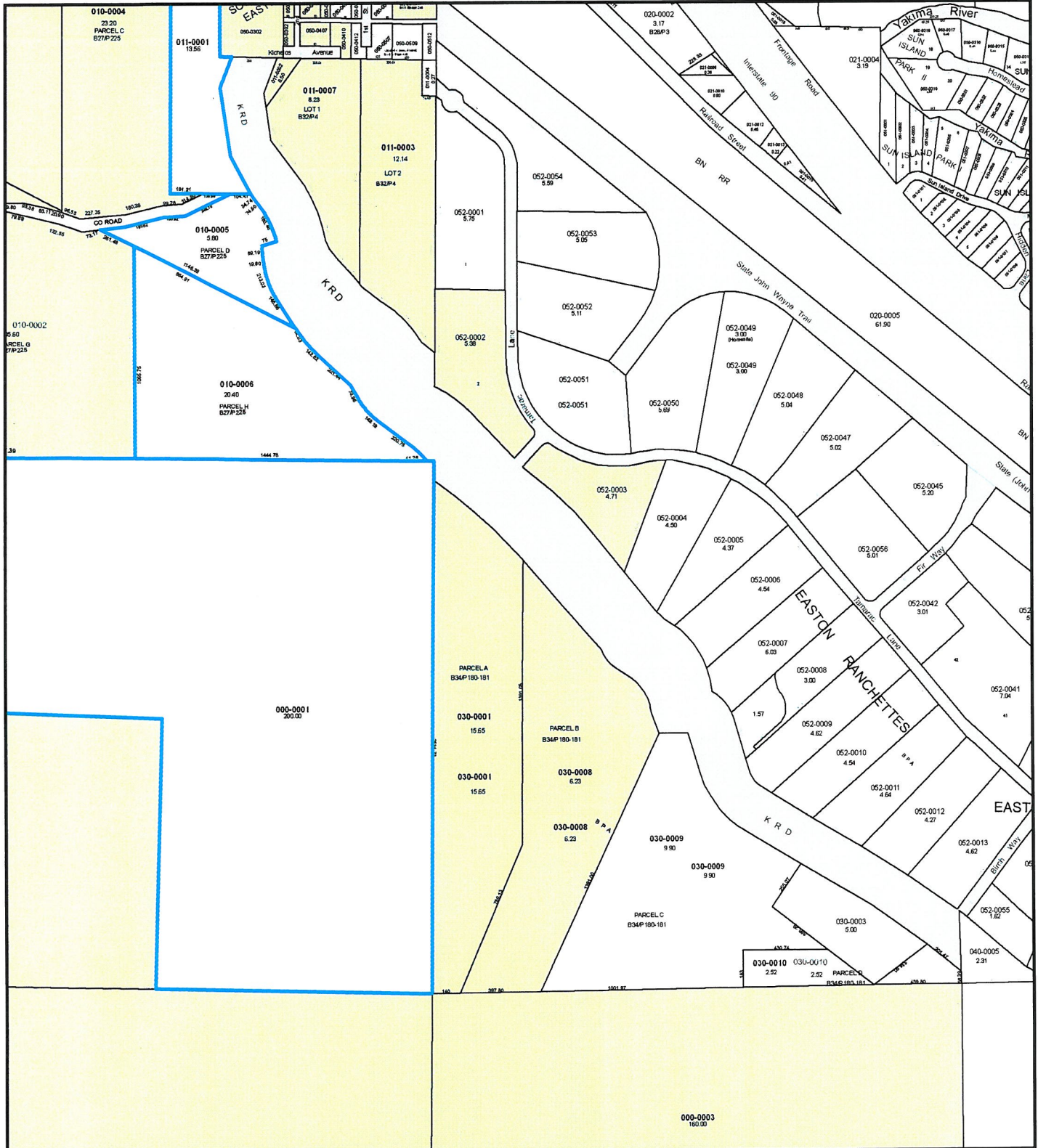
- Buffer Result
- Tax Parcels
- Rights of Way

Disclaimer:

Kittitas County makes every effort to produce and publish the most current and accurate information possible. No warranties, expressed or implied, are provided for the data provided, its use, or its interpretation. Kittitas County does not guarantee the accuracy of the material contained herein and is not responsible for any misuse or representations by others regarding this information or its derivatives.



Cabin Mountain LLC



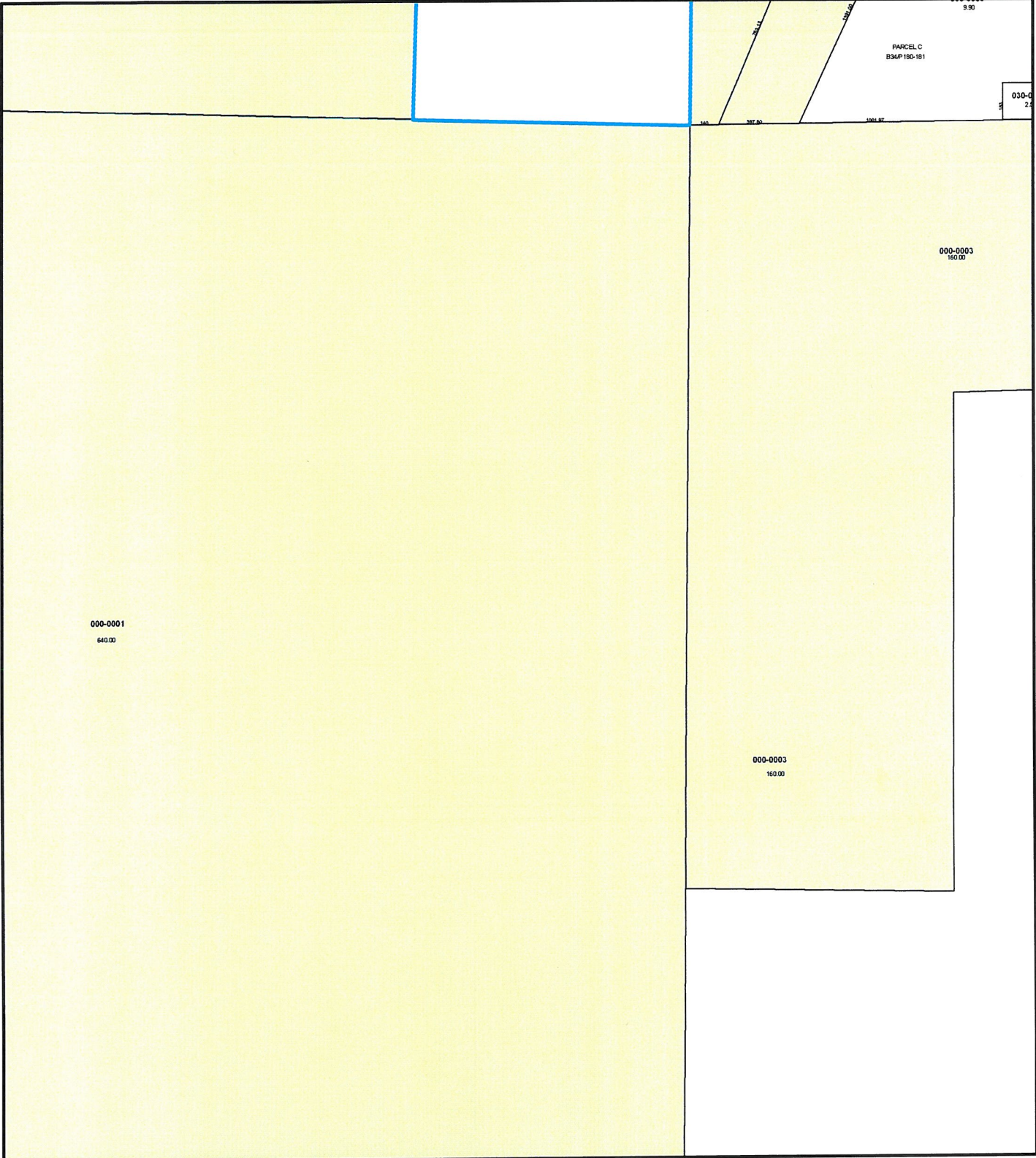
1 inch equals 0.13 miles

- Legend**
- Buffer Result
 - Tax Parcels
 - Rights of Way

Disclaimer:
 Kittitas County makes every effort to produce and publish the most current and accurate information possible. No warranties, expressed or implied, are provided for the data provided, its use, or its interpretation. Kittitas County does not guarantee the accuracy of the material contained herein and is not responsible for any misuse or representations by others regarding this information or its derivatives.



Cabin Mountain LLC



Legend

- Buffer Result
- Tax Parcels
- Rights of Way

Disclaimer:

Kittitas County makes every effort to produce and publish the most current and accurate information possible. No warranties, expressed or implied, are provided for the data provided, its use, or its interpretation. Kittitas County does not guarantee the accuracy of the material contained herein and is not responsible for any misuse or representations by others regarding this information or its derivatives.

